

# Elver-1 EcoScope Service RT 200MD

Format: ECO-SON-GVR\_200MD\_RT

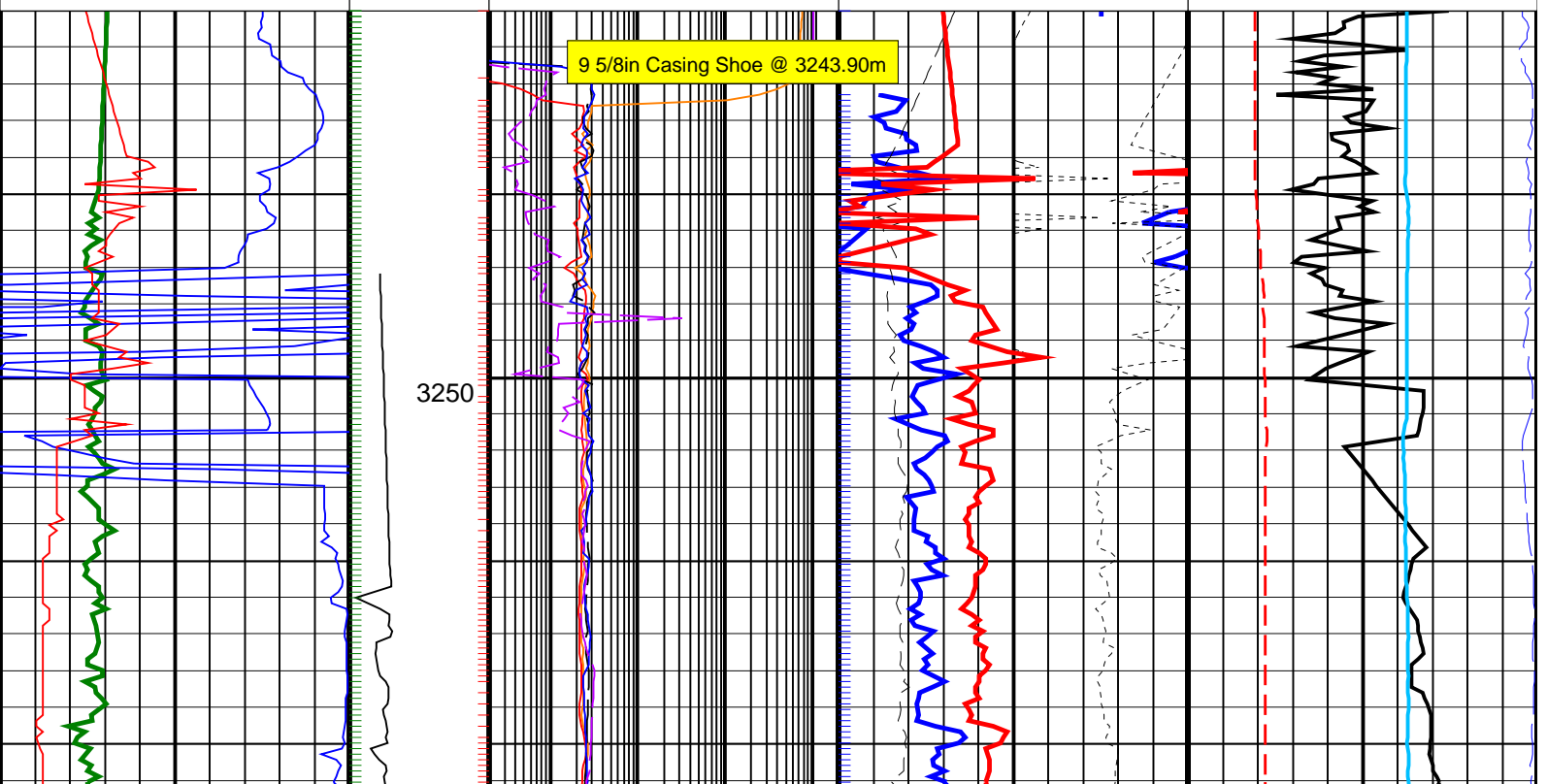
Vertical Scale: 1:200

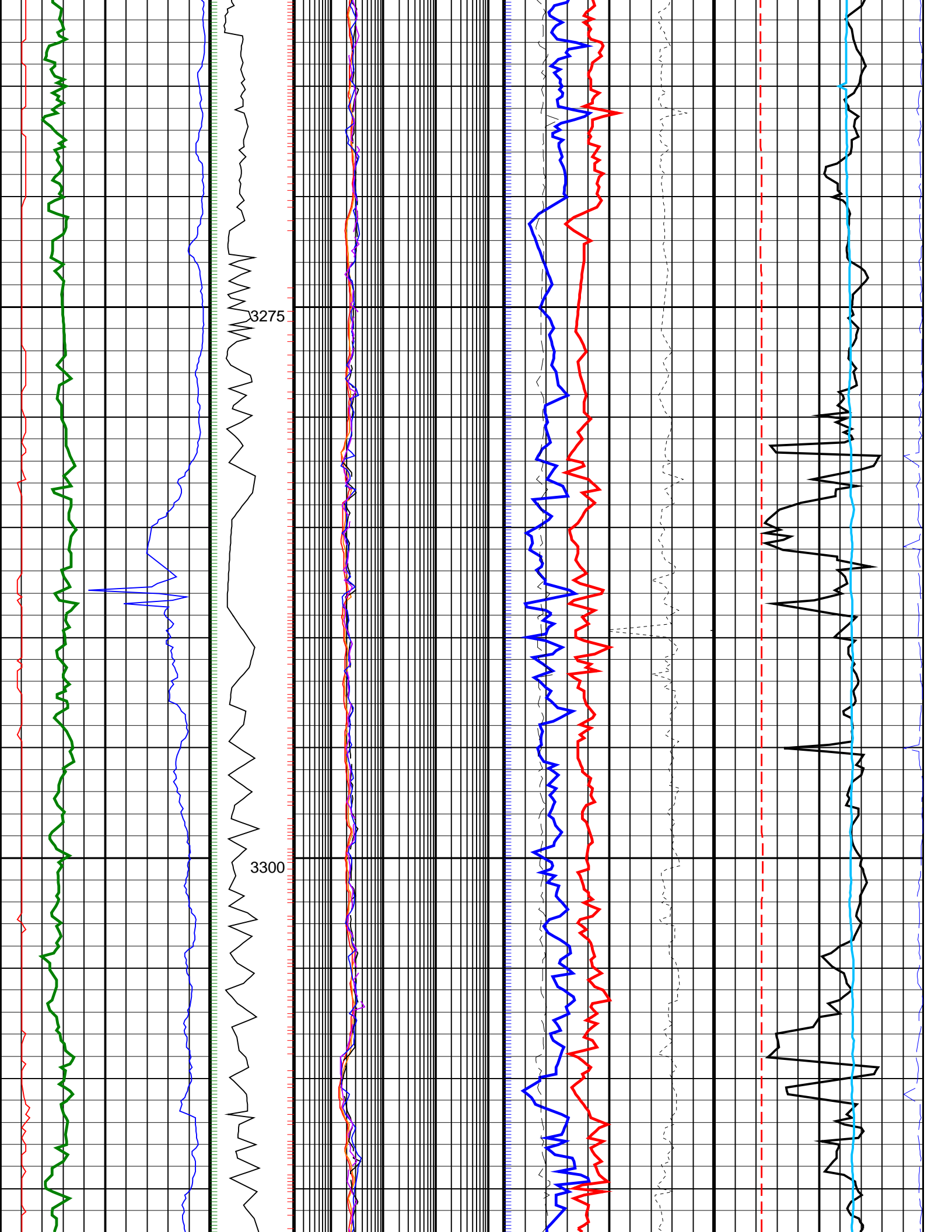
Graphics File Created: 05-Jan-2009 08:10

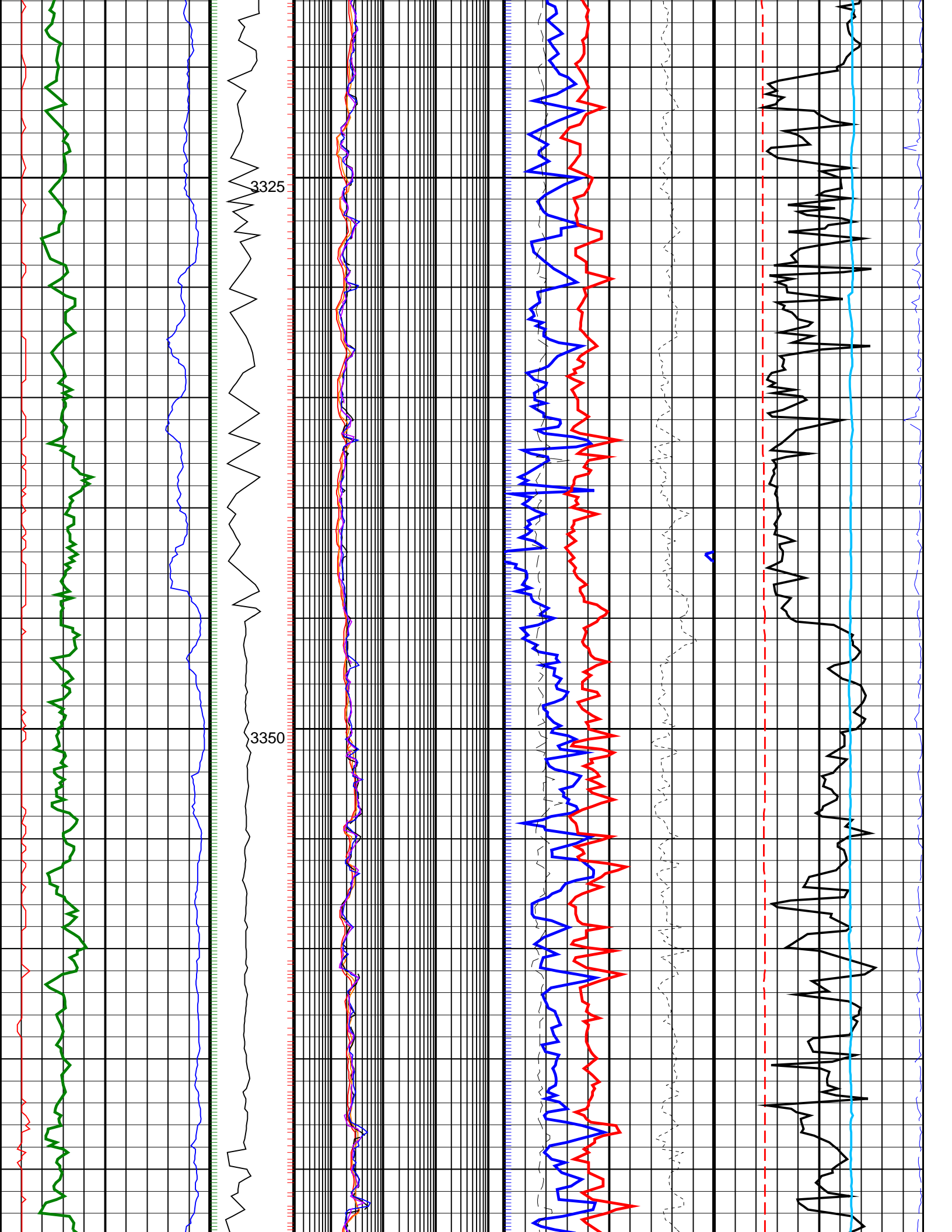
## PIP SUMMARY

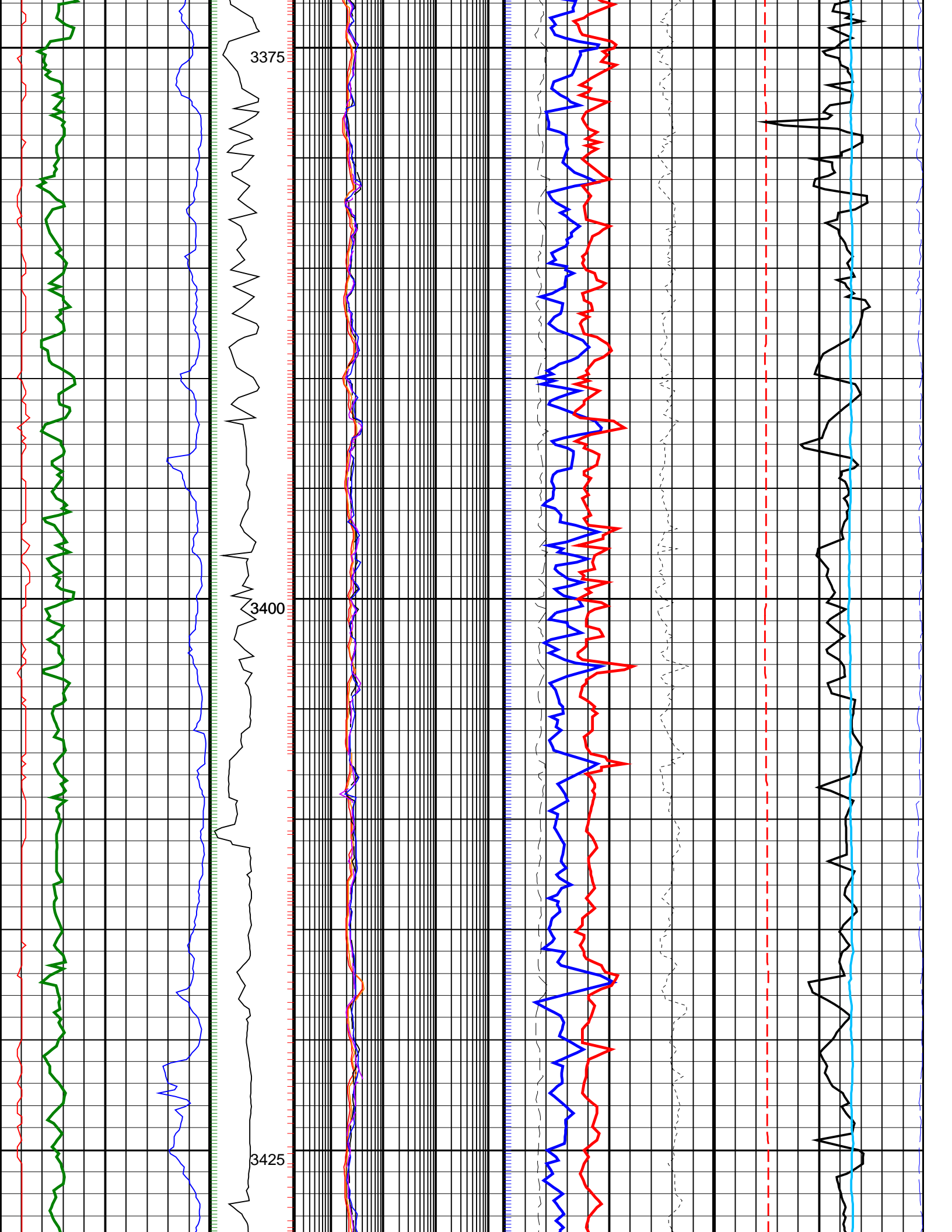
Gamma Ray Samples  
Neutron Samples  
Resistivity Samples

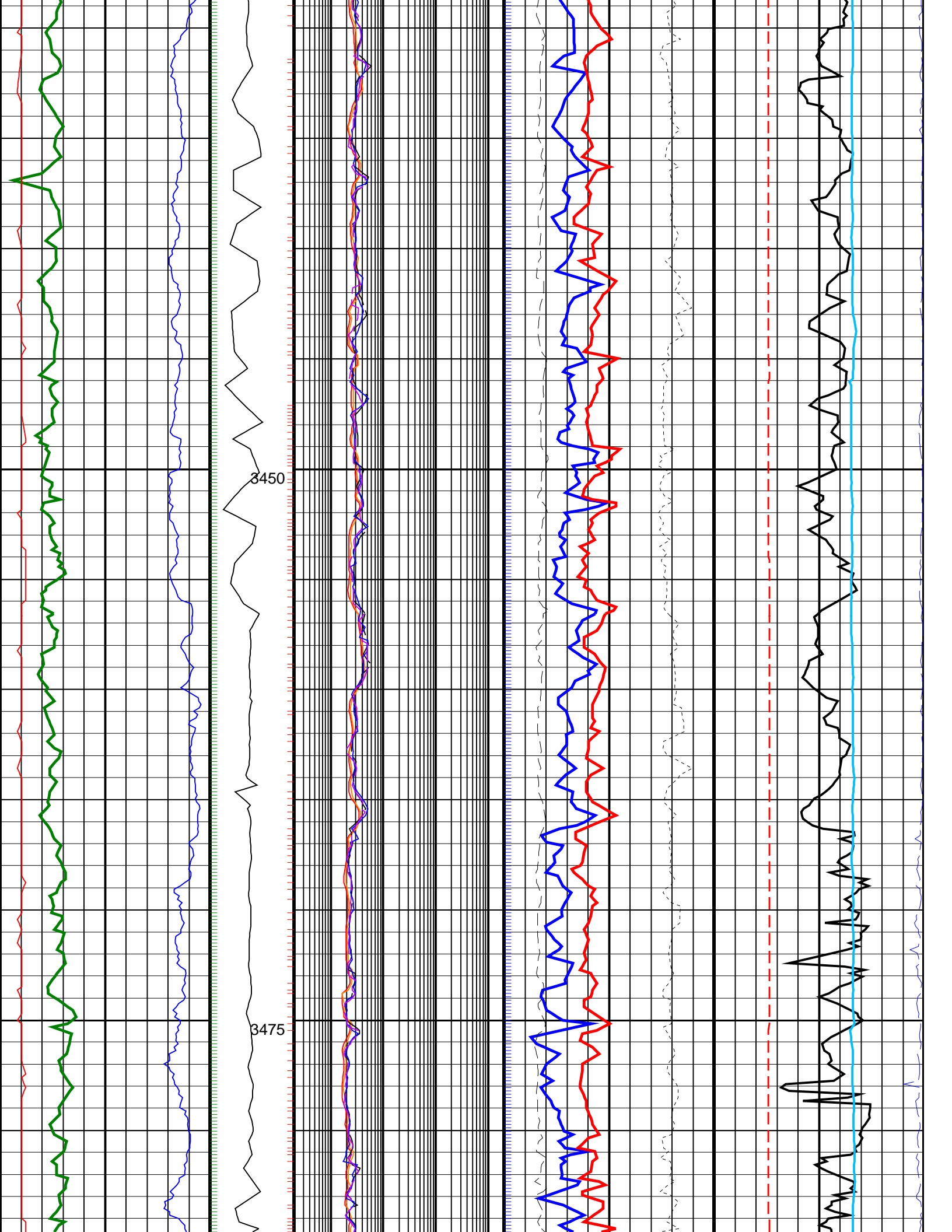
	Shallow Button Resistivity, Real-Time (RES_BS_RT) 0.2 (OHMM) 2000		Equivalent Circulating Density, Real-Time (ECD_ECO_RT) 0 (G/C3) 2	
	Deep Button Resistivity, Real-Time (RES_BD_RT) 0.2 (OHMM) 2000			
Ultrasonic Caliper, Average Diameter, Real-Time, Recomputed at Surface (UCAV_ECO_RT) 8 (IN) 13	Ring Resistivity, Real-Time (RES_RING_RT) 0.2 (OHMM) 2000	Photoelectric Factor, Bottom, Real-Time, Computed Downhole (PEB_DH_ECO_RT) 0 (----) 10	Bulk Density Correction, Bottom, Real-Time Computed Downhole (DRHB_DH_ECO_RT) (G/C3) -0.25 0.25	Delta-T Compressional, Real-Time (DTCO_RT) 40 (US/F) 140
Gamma Ray, Average, Real-Time (GRMA_ECO_RT) 0 (GAPI) 200	ARC Phase Shift Resistivity 40 inch at 2 MHz, Real-Time (P40H_ECO_RT) 0.2 (OHMM) 2000	Bulk Density, Bottom, Real-Time, Computed Downhole (ROBB_DH_ECO_RT) (G/C3) 1.95 2.95	Coherence at Compressional Peak, Real-Time (CHCO_RT) -9 (----) 1	
ROP*5 (ROP5) 200 (M/HR) 0	MWD Collar RPM (CRPM_RT) (RPM) 0 400	ARC Phase Shift Resistivity 16 inch at 2 MHz, Real-Time (P16H_ECO_RT) 0.2 (OHMM) 2000	Best Thermal Neutron Porosity, Average, Real-Time (BPHI_ECO_RT) (PU) 45 -15	Downhole Annulus Temperature, Real Time, Computed Downhole (DHAT_DH_ECO_RT) (DEGC) 0 --- 200

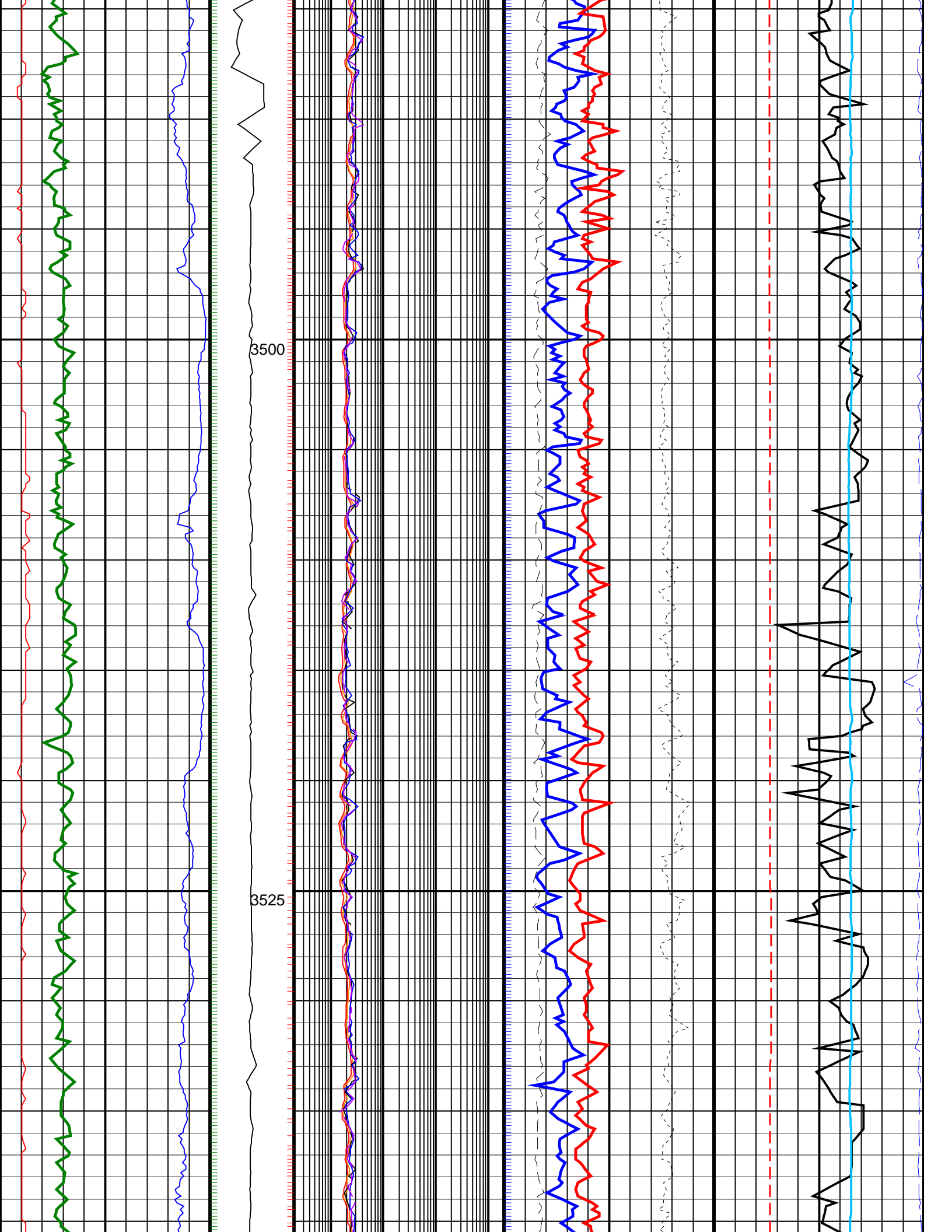


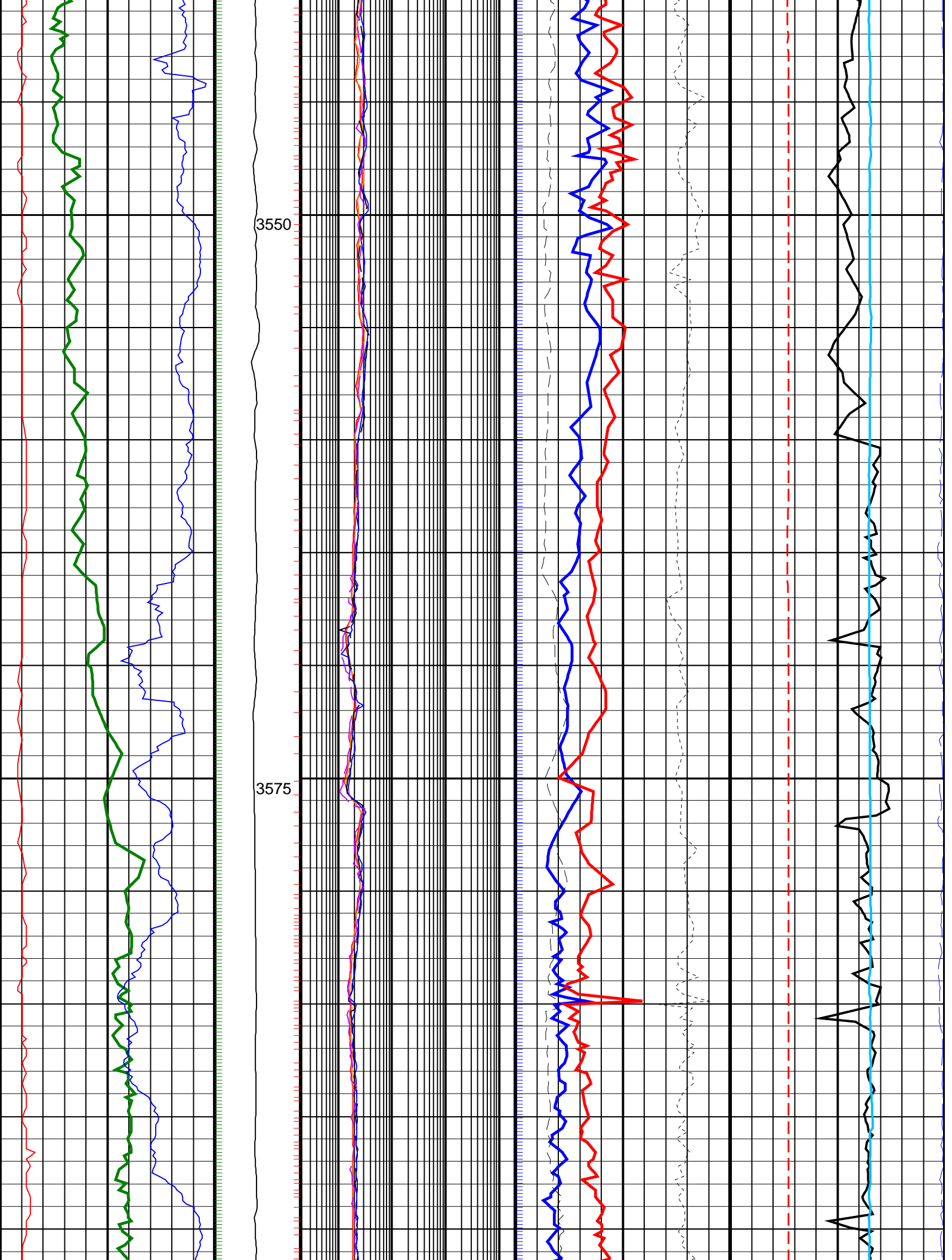


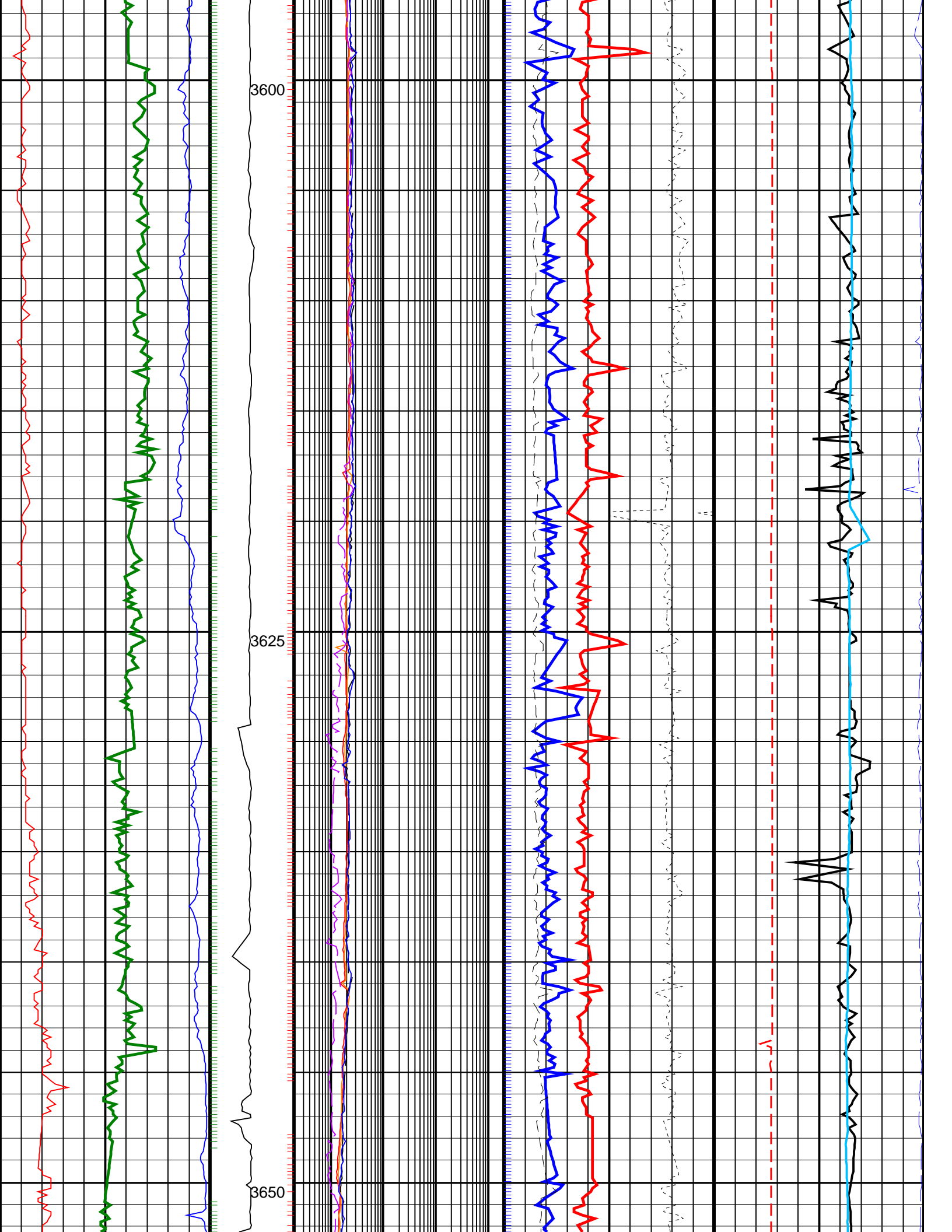




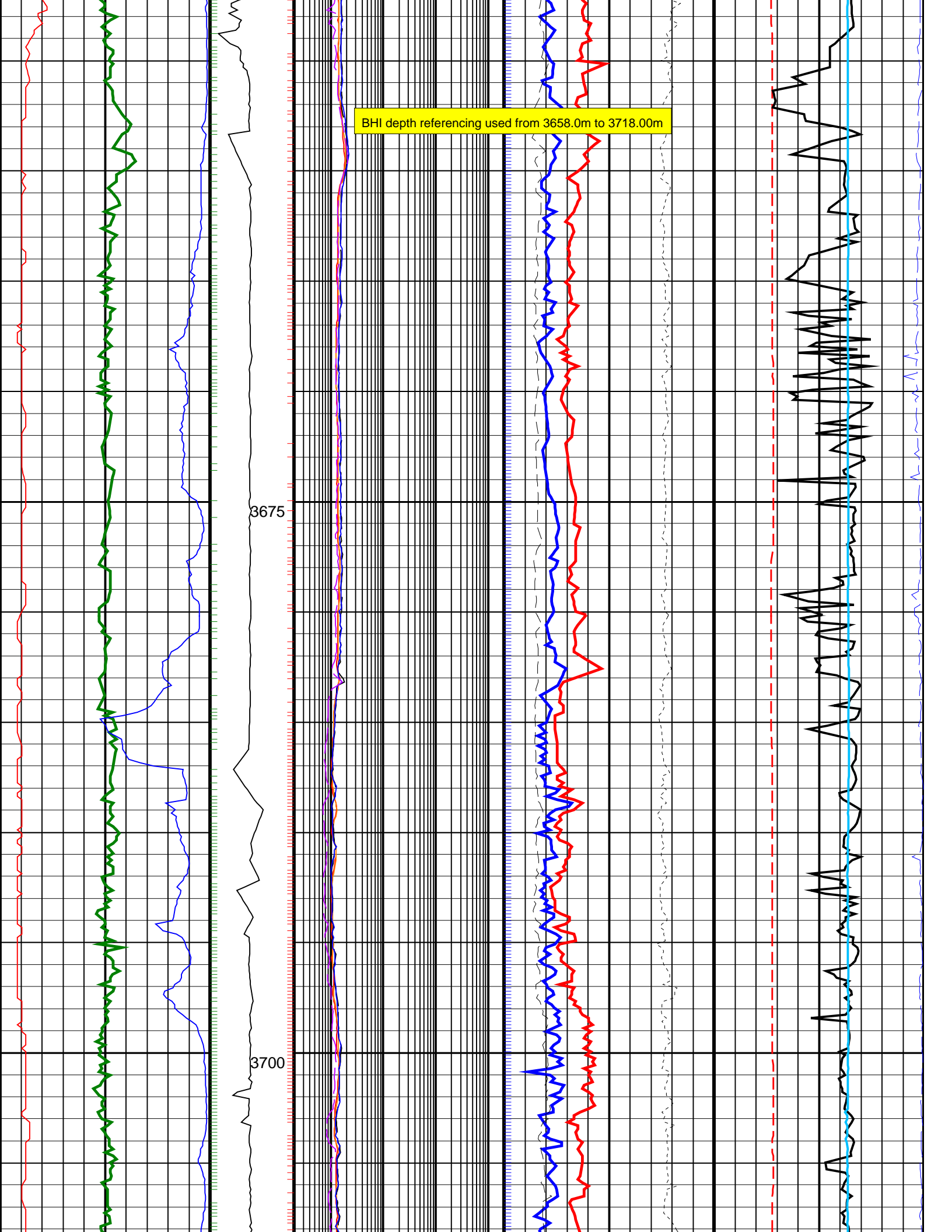


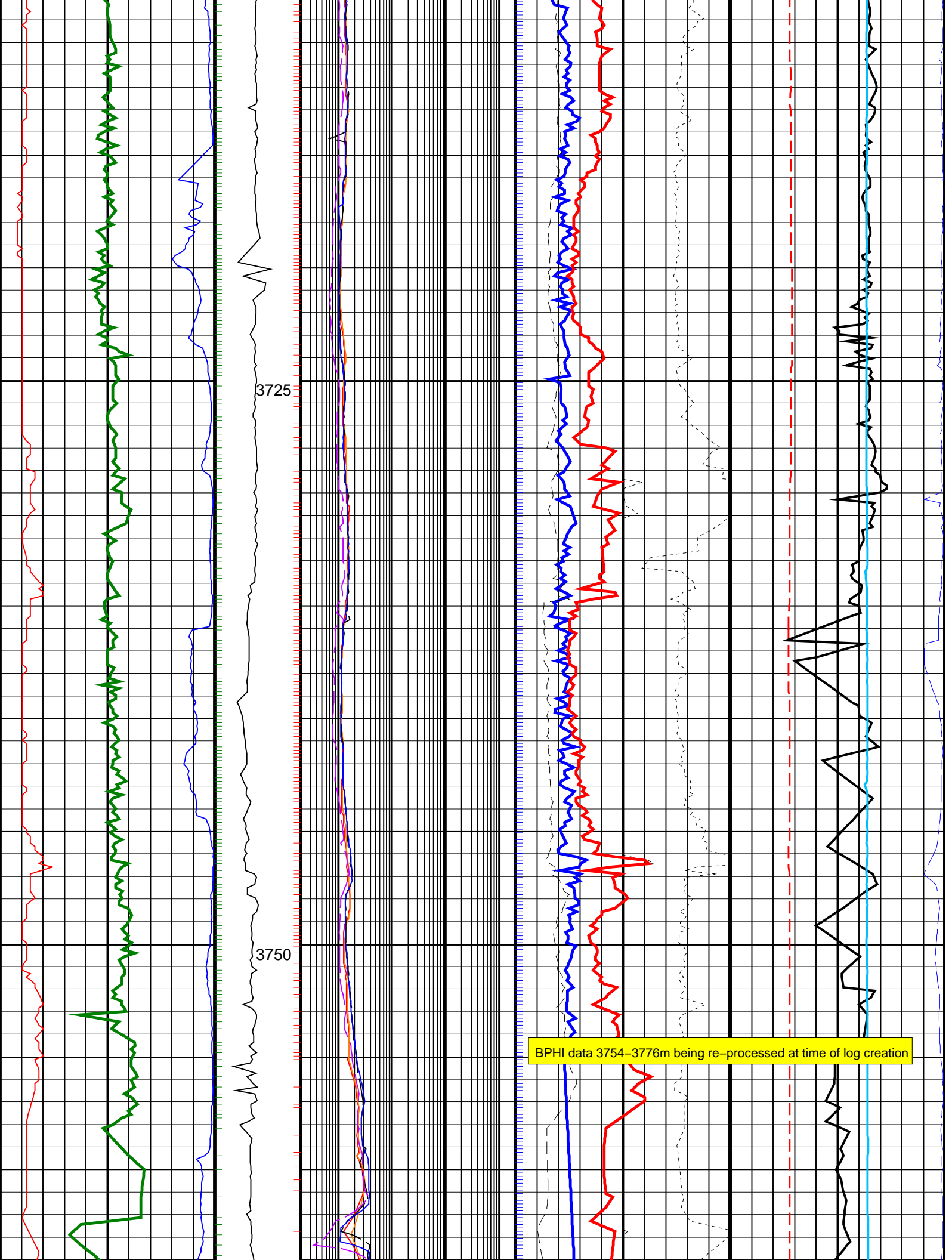


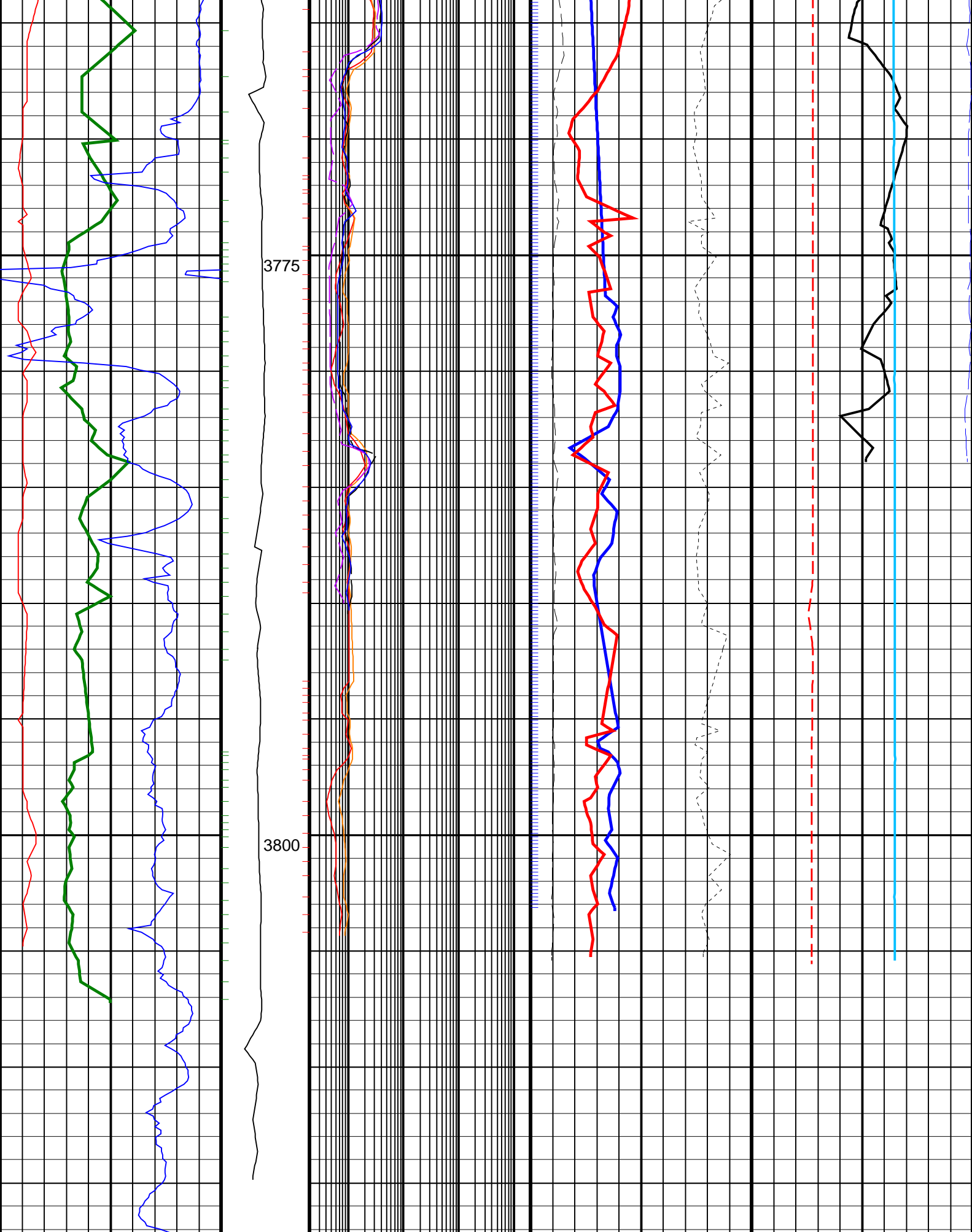












200	ROP*5 (ROP5) (M/HR)	0	MWD Collar RPM (CRPM_RT)	ARC Phase Shift Resistivity 16 inch at 2 MHz, Real-Time (P16H ECO RT)	Best Thermal Neutron Porosity, Average, Real-Time (BPHI_ECO_RT)	Downhole Annulus Temperature, Real Time, Computed Downhole (DHAT_ DH_ECO_RT)
-----	------------------------	---	--------------------------------	---	---	---

	(RPM)	0.2 (OHMM) 2000	45 (PU) -15	0 (DEGC) 200
Gamma Ray, Average, Real-Time (GRMA_ECO_RT)	0 (GAPI) 200	ARC Phase Shift Resistivity 40 inch at 2 MHz, Real-Time (P40H_ECO_RT)	Bulk Density, Bottom, Real-Time, Computed Downhole (ROBB_DH_ECO_RT)	Coherence at Compressional Peak, Real-Time (CHCO_RT)
		0.2 (OHMM) 2000	1.95 (G/C3) 2.95	-9 (----) 1
Ultrasonic Caliper, Average Diameter, Real-Time, Recomputed at Surface (UCAV_ECO_RT)	8 (IN) 13	Ring Resistivity, Real-Time (RES_RING_RT)	Photoelectric Factor, Bottom, Real-Time, Computed Downhole (PEB_DH_ECO_RT)	Bulk Density Correction, Bottom, Real-Time Computed Downhole (DRHB_DH_ECO_RT)
		0.2 (OHMM) 2000	0 (----) 10	-0.25 0.25
		Deep Button Resistivity, Real-Time (RES_BD_RT)		Equivalent Circulating Density, Real-Time (ECD_ECO_RT)
		0.2 (OHMM) 2000		0 (G/C3) 2
		Shallow Button Resistivity, Real-Time (RES_BS_RT)		
		0.2 (OHMM) 2000		
<div> <div>PIP SUMMARY</div> <div> <div>Gamma Ray Samples</div> <div>Neutron Samples</div> <div>Resisitivity Samples</div> </div> </div>				
<div> <div>IDEAL Version: ID13_0C_08</div> <div>IDF</div> <div> <div>ECO6</div> <div>id13_0c_02</div> <div>MWD_10</div> <div>id13_0c_02</div> </div> <div> <div>RAB</div> <div>id13_0c_02</div> <div>SON675</div> <div>id13_0c_02</div> </div> </div>				